



Y  
CANYON

SMART PARKING.  
CLEAN POWER.  
SOLAR CANOPIES AT SPEED AND SCALE.

2025  
PRODUCT GUIDE

Image: Canyon Solar canopy in Unanderra, NSW





Image: Canyon Solar at IGA Baranduda, VIC



# ABOUT CANYON SOLAR

Canyon Solar's mission is to make solar canopies the mainstream form of undercover parking in Australia and abroad. We want to transform car parks to be the renewable energy hubs of the future, and have solar shade account for half of commercial undercover parking by 2030.

## How are we achieving this?

### Powering Smarter Spaces — Fast

We are accelerating the clean energy transition by turning car parks into high-performance solar assets — quickly, efficiently, and at scale. We've developed the world's first modular solar canopy system, designed in Australia and precision-manufactured off-site for rapid deployment. Our system installs up to 3x faster than conventional structures, minimising disruption to everyday operations.

### Delivering More Than Solar

Our canopies do more than generate clean energy — they enhance the spaces beneath them. Each system is delivered with integrated shade, lighting and waterproofing, and can be integrated with EV charging and other smart technologies. The result is a premium, plug-and-play infrastructure solution that improves customer experience, supports electrification, and boosts site value for clients across retail, logistics, government, and commercial property.

### Built for Scale — and Built to Last

From our 1,200m<sup>2</sup> manufacturing facility in Braemar, NSW, we're building for national impact. With a growing in-house technical team and 12MWp annual production capacity, we're partnering with Australia's leading retailers, EPCs, and public agencies to deliver behind-the-meter solar at speed. By combining infrastructure expertise with cutting-edge product design, we are setting a new standard for solar canopy deployment — in Australia and beyond.



Will Beaumont  
Founder & Director

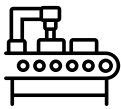


# WHY CANYON SOLAR?



## **COMPETITIVE WITH SHADE CLOTH AND ROOFTOP SOLAR**

Shade sails don't generate power. Rooftops don't improve customer experience. Canyon canopies do both — and are cost competitive.



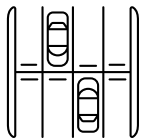
## **BUILT FOR SPEED IN LIVE CARPARKS**

Prefabricated system installs 3x faster, with less disruption and onsite labour costs in live car parks.



## **DESIGNED FOR USER EXPERIENCE**

Shaded, comfortable parking enhances customer experience and dwell time.



## **STANDARDISED AND SCALABLE**

Whether it is 10 car parks or 10,000, our standardised system delivers consistently.



## **EV READY FROM DAY ONE**

Integrated EV charging or charger-ready, for the shift to electric mobility



## **EXPERTS FROM START TO FINISH**

One team. One system. We design, build and deliver.

# WHO WE WORK WITH





# A WORLD FIRST - OUR PREFABRICATED, MODULAR CANOPY

- 80% of our system is prefabricated offsite in our NSW manufacturing facility
- We prefabricate modular 'solar pods' inclusive of racking, solar modules and wiring for transport to site
- Prefabrication occurs in factory conditions, with rigorous quality control and consistent production schedules
- With two standardised system designs, our canopies can be produced efficiently and consistently at scale





# SYSTEM DESIGN & SPECIFICATIONS





# CANOPY SPECIFICATIONS



## SINGLE WING

### STANDARD CAPACITY

Panel configuration	4 (landscape)
Panel powerclass	700W+
Installed capacity per car space	3.1kWp
Min Height under structure	2.9m
Horizontal span	5.4m
Structural Steel RHS	200x100x4
Span between columns	10.8m

### HIGH CAPACITY

Panel configuration	6 (landscape)
Panel powerclass	585W+
Installed capacity per car space	4.1kWp
Min Height under structure	2.9m
Horizontal span	7m
Structural Steel RHS	200x100x4
Span between columns	10.8m



# DOUBLE WING



## STANDARD CAPACITY

Panel configuration	4 per wing (landscape)
Panel powerclass	700W+
Installed capacity per car space	3.1kWp
Min Height under structure	2.9m
Horizontal span	10.8m
Structural Steel RHS	200x100x4
Span between columns	10.8m

## HIGH CAPACITY OR WALKWAY

Panel configuration	6 per wing (landscape)
Panel powerclass	585W+
Installed capacity per car space	4.1kWp
Min Height under structure	2.9m
Horizontal span	14m
Structural Steel RHS	200x100x4
Span between columns	10.8m

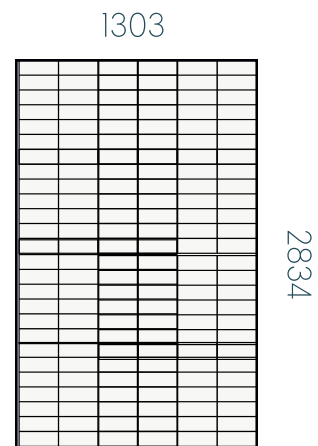




# MODULE SPECIFICATIONS

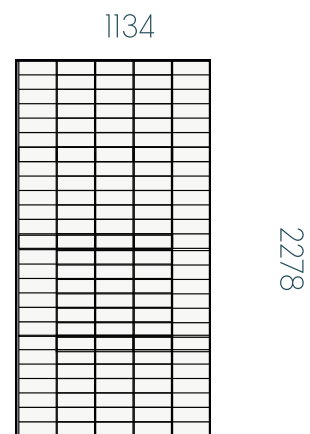
## STANDARD CAPACITY

- N-type Bifacial
- 700 W ~ 730 W
- Module efficiency up to 23 %
- Heavy snow load up to 5400 Pa
- Wind Load up to 2400 Pa



## HIGH CAPACITY/WALKWAY

- N-type Bifacial
- 585 W ~ 600 W
- Module efficiency up to 23 %
- Heavy snow load up to 5400 Pa
- Wind Load up to 2400 Pa



Preferred Providers:





# STANDARD FEATURES

## WATERPROOFING & ABOVE-GROUND HYDRAULICS

Our canopy is waterproof, with the design, supply and installation of all above-ground stormwater management as standard, including:

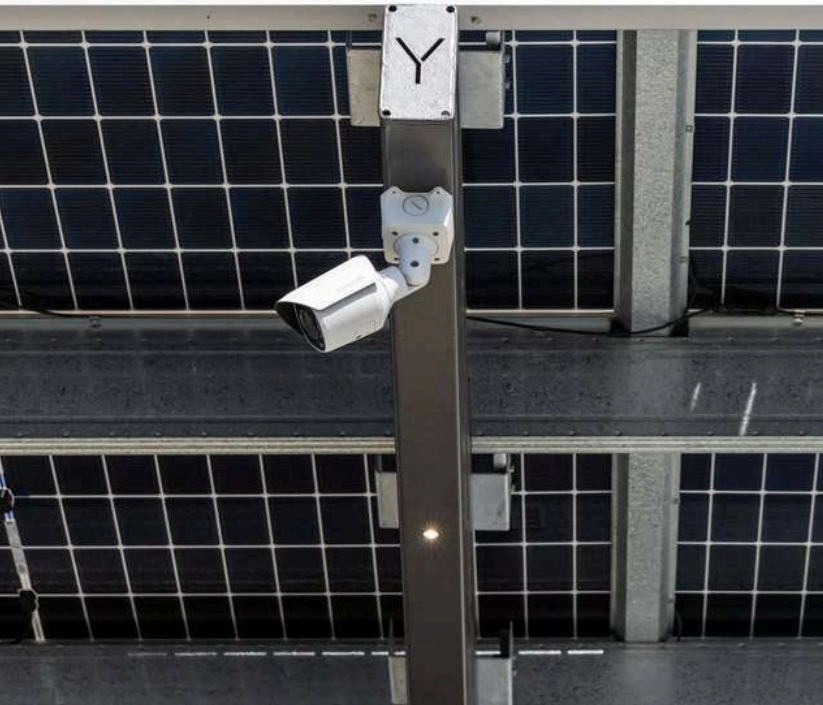
- Guttering (box gutter or quad gutter)
- Rainhead, rainsumps and overflows as determined by hydraulic specification
- Downpipes

## LIGHTING

- All Canyon solar canopies meet PCI of AS/NZS.1158.3.1:2020 - the highest level of lighting for outdoor carparks
- Lighting is included in standard pricing
- Puk-style lighting seamlessly integrated into laser-cut rafter
- Prewired and internally reticulated - no messy cabling or debris build-up



# INTEGRATIONS



## CCTV

- Optional integration into canopy system
- internally reticulated wiring

## CUSTOM FINISHES

- custom painted finish
- fascia panels

## BRANDING & ADVERTISING

- Backlit, lasercut logo mounted to column
- Integrated Digital-Out-Of-Home (DOOH) advertising

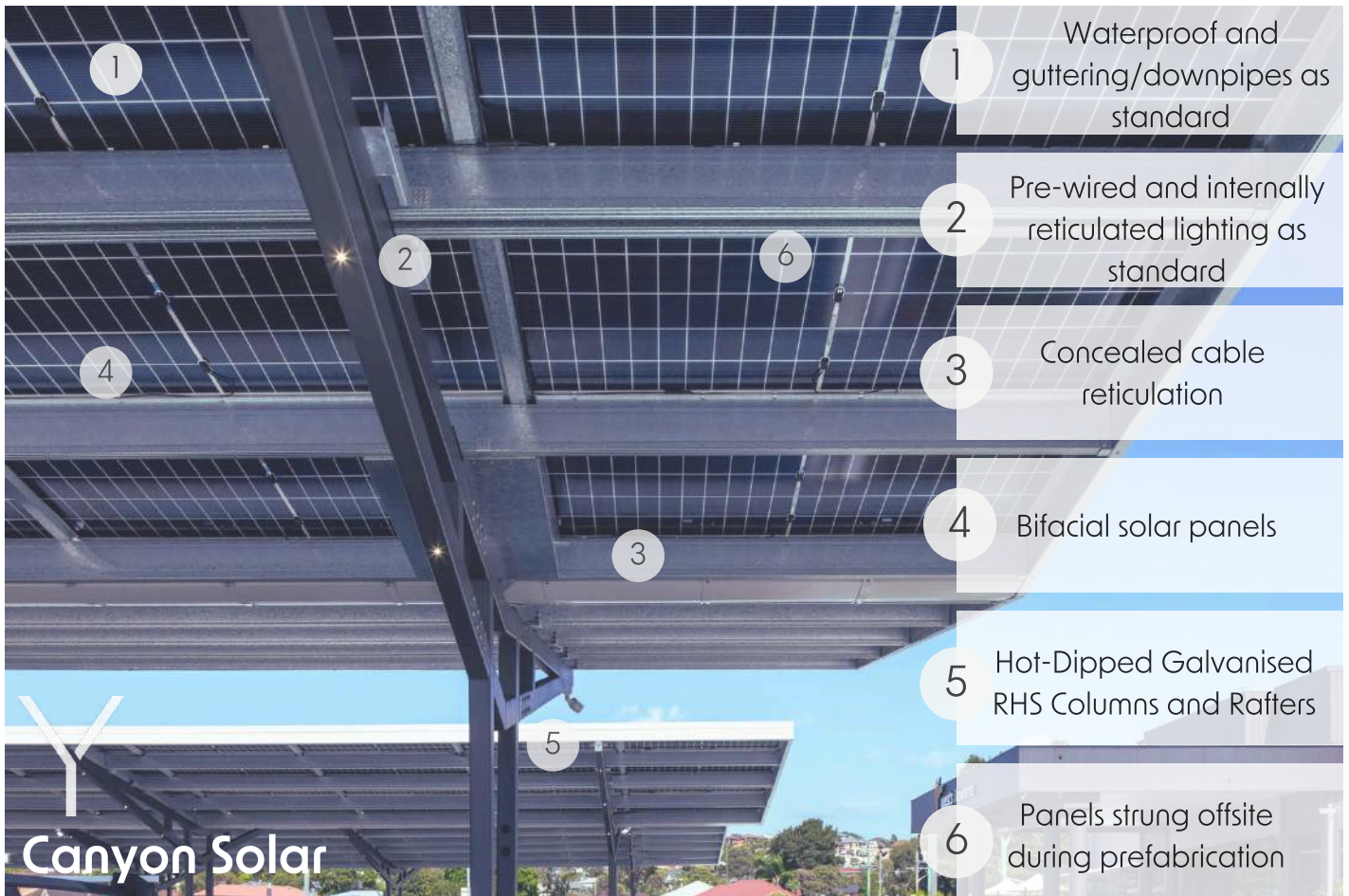
## EV CHARGING

- Optional integration into canopy system
- Column mounted
- Servicing up to 4 carpark bays per column
- Backlit with laser-cut client branding
- Both AC and DC charging
- System can be supplied as 'EV charger ready' with conduit installed for future EV charging upgrades





# CANYON SOLAR VS. COMPETITOR SYSTEMS





# ONSITE INSTALLATION

Start

8 Days

## 1. CIVIL WORKS

- Site Establishment
- Foundation set out and strip footing mark out
- Removal of existing surface
- Installation of screw piers (OR bored concrete piers)



10 Days

## 2. MECHANICAL WORKS

- Erection of Structural Steel (Columns & Rafters)
- Crane Installation of Prefabricated Pods
- Installation of Infill Panels



4 Days

## 3. ELECTRICAL WORKS

- 80% of electrical installation is completed during prefabrication
- wiring of infill panels
- termination of earth and DC cables
- installation of EV charging infrastructure
- Lighting



3 days

## 4. ABOVEGROUND HYDRAULICS

- installation of guttering & downpipes

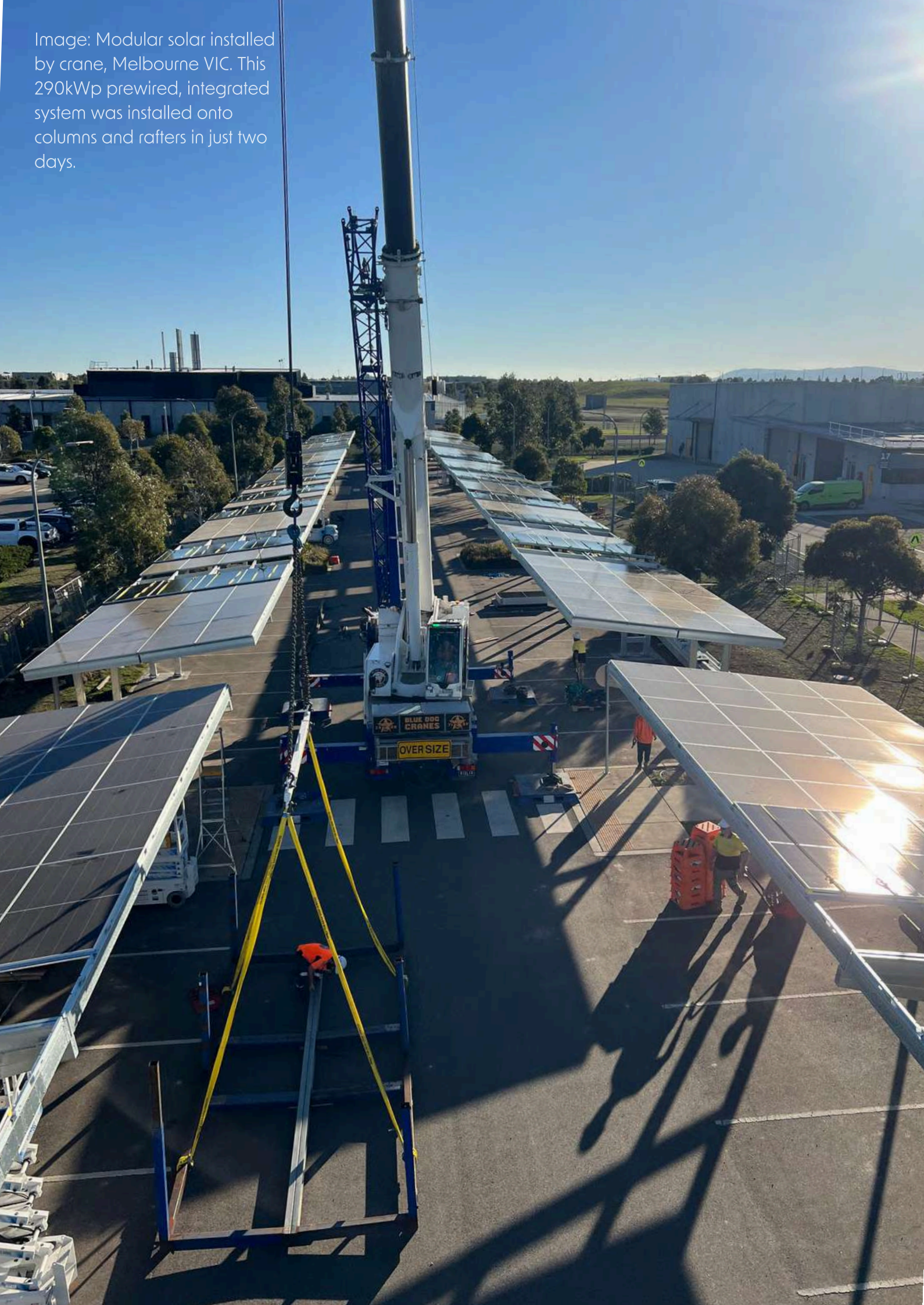


Finish

Indicative Timeline based on average project (200kWp) is less than 5 weeks



Image: Modular solar installed by crane, Melbourne VIC. This 290kWp prewired, integrated system was installed onto columns and rafters in just two days.





# FREQUENTLY ASKED QUESTIONS

**Will a Canyon Solar Canopy result in less car spaces?** No, our system is designed to work within existing car parks with zero loss of car spaces

**Is there a warranty on the solar canopy?** Yes, we provide a 10 year warranty for the structure

**What is the typical installation timeline?** 4-5 weeks for an average system (200kWp)

**How much of the solar canopy is built offsite?** 80% of the system is built offsite including electrical wiring and module mounting

**What does Canyon Solar's pricing include?** Our pricing includes design, supply and installation of all components within the solar array. We provide a comprehensive scope of inclusions with our pricing.

**Can we use our builder for the foundations?** Yes, we can specify the foundation design for other contractors. This is common in greenfield sites.

**Is there a minimum or maximum project size?** We can install projects as small as 30kWp (6 car spaces). Our system is standardised and designed for scale, with no project too big!

**Does the solar canopy work with any module?** We have standardised our system to work with the two main sizes in the market that are provided by most tier 1 manufacturers.

**Can Canyon Solar provide a custom design?** We're always happy to explore custom options, however our standardised design is suited to most car parks and is most cost efficient.

**Does Canyon Solar install canopies on rooftop car parks/suspended slabs?** Yes



Image: Canyon Solar at IGA Baranduda, VIC



LET'S CHAT ABOUT WHY CANYON SOLAR SHOULD BE  
YOUR LONG-TERM SUSTAINABILITY PARTNER

CONTACT US TODAY:

Email: [sales@canyonsolar.com.au](mailto:sales@canyonsolar.com.au)

Phone: 0439 448 021

Website: [www.canyonsolar.com.au](http://www.canyonsolar.com.au)



Image: Canyon Solar at IGA Baranduda, VIC